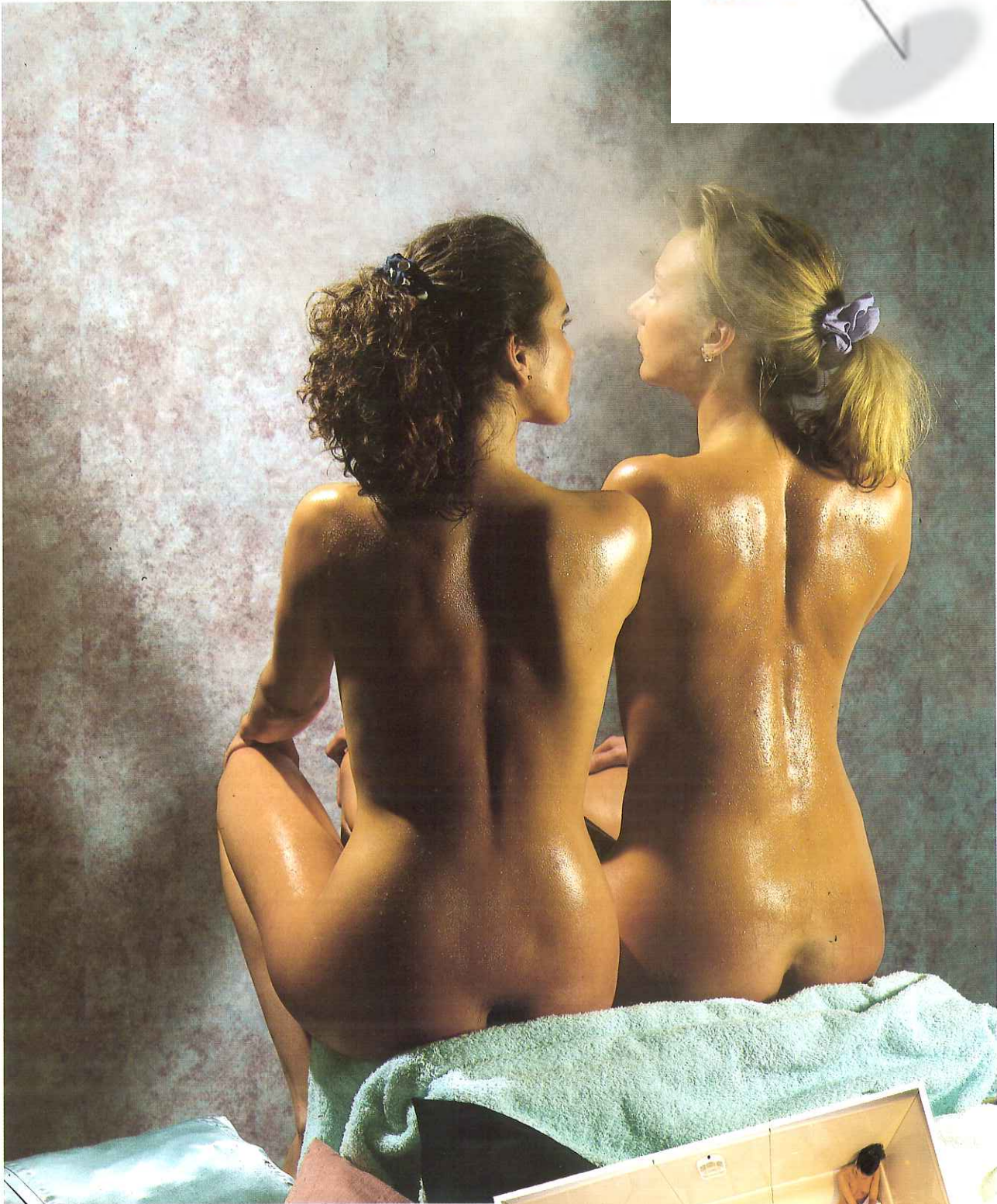


Cascais Piscinas e Spas



www.  
Mergulho Salgado  
.com



STEAMBATH SERIES



Mergulho Salgado Piscinas e Spas, Lda.  
Tel. / Fax. 21 607 55 98 Telem. 919 91 60 50 / 962 444 011  
[geral@mergulhosalgado.com](mailto:geral@mergulhosalgado.com) [www.mergulhosalgado.com](http://www.mergulhosalgado.com)

ROMA 2001 -  
THE ROMAN STEAM BATH

Let the gentle clouds of soft steam surround you bringing the pleasure of total relaxation!

For thousands of years, the importance of the steam bath as a key part of Roman bathing culture has been well known.

Following the success of our Finnish sauna baths, it has taken much time and research to achieve the breakthrough - a practical, modern steam cabin which produces the traditional climate enjoyed by the Romans.

We have called on all our experience to design a steam room which guarantees a healthy restful ambience and absolute comfort for the bather.

New technology enables exact control of temperature range providing a perfect environment to suit individual taste. The combination of a reliable, well engineered steam generator and the high constructional quality of the cabin will ensure many years of trouble-free steam pleasure.

Steam bathing offers similar rewards to those of the Finnish sauna but with a very different climate. Unlike the dry heat of sauna, a roman bath is taken in warm, moist atmosphere. With very high humidity (up to 100%) and relatively low temperature (around 45° C) there are many beneficial effects.

In addition to the relaxing sense of well-being and satisfaction of new-found energy which steam brings, it may prove an excellent therapy for certain medical ailments such as Asthma, Rheumatism, Bronchitis, Gout, muscle strains and blood circulation disorders.

The cosmetic benefits should also be considered. Steam bathing has been recommended for a smooth, soft and healthy complexion. By opening the pores, impurities are flushed out, leaving the skin clean and fresh.

As with sauna, the critical factor in steam bathing is the interaction between hot and cold. The correct blend between these will ensure maximum benefit. Every visit to the steam room must be followed by a cooling phase. You may return to the steam as often as you wish but a period of rest in between will heighten the impact of well-being and restful peace.

A ROMA 2001 Steam Bath can assist in protecting your health, enhance your appearance and provide great enjoyment through the gentle relaxation of body and mind.

Our range is sure to include a model to suit you. For private or commercial use, your Roma 2001 dealer can recommend a steam room to meet your requirements - we will gladly advise on the specialist in your area.

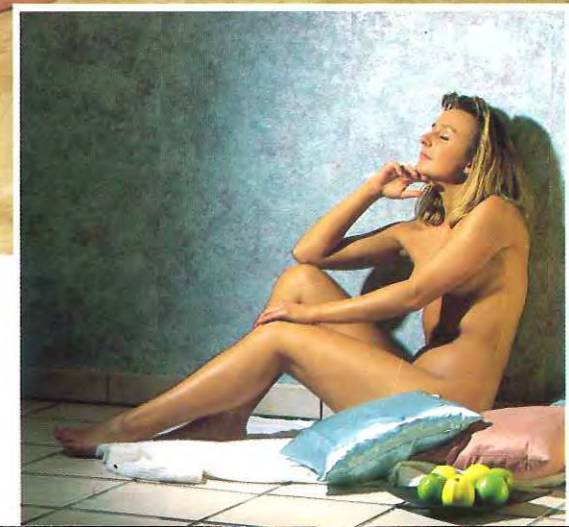


**Mergulho Salgado Piscinas e Spas, Lda.**  
Tel. / Fax. 21 607 55 98 Telem. 919 91 60 50 / 962 444 011  
[geral@mergulhosalgado.com](mailto:geral@mergulhosalgado.com) [www.mergulhosalgado.com](http://www.mergulhosalgado.com)

A commercial steam room will give both operator and bathers many years of service. High quality Acrylic with its smooth, high glazed and non-porous surface ensures a maintenance free, hygienic cabin. The wall elements with extra-wide integrated seating are accurately manufactured to allow an exact fit at every joint.

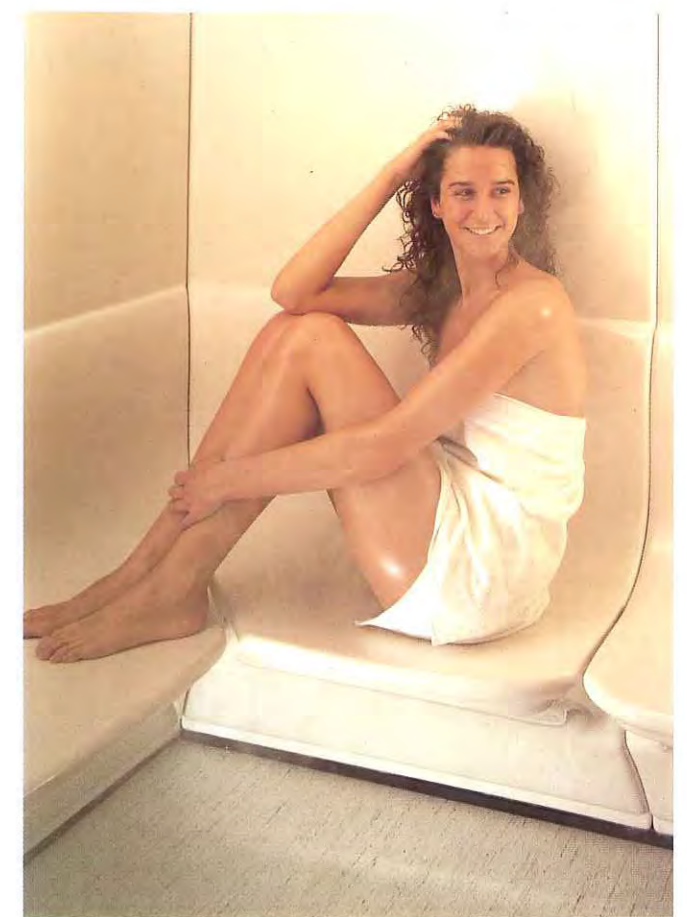
ENJOY YOURSELF IN THE WARM  
CLOUDS OF RELAXATION!

**Cascais Piscinas e Spas**





# STEAMBATH SERIES ROMA 2001



*Even the more compact models in our range provide spacious accommodation. The Model II with seating for four is especially designed for domestic use. The boarding around this cabin has been faced with a waterproof paper.*

*A Stylish Look – our Model III steam room with clever corner design. The space-saving exterior shape provides ample internal accommodation. Our cabins are designed and manufactured to enable easy fitting in the place of your choice.*

*Here, the panelling used to decorate the external walls of the steam room has been protected with a special white lacquer coating.*

*The picture on the right shows the adjustable ventilation outlet and "Turbo-jet" head for cleaning the interior.*



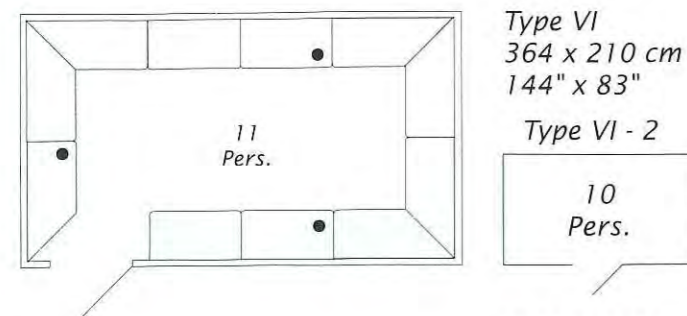
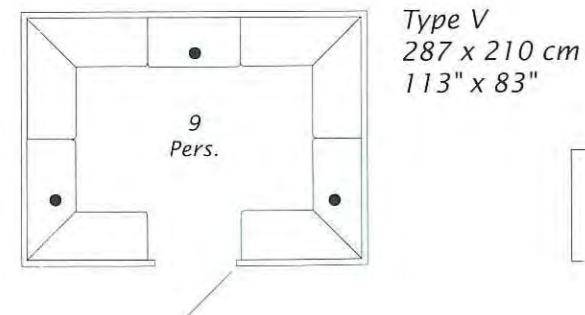
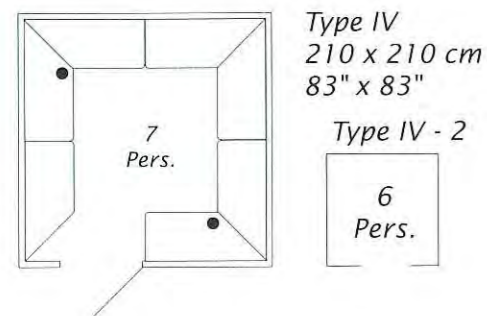
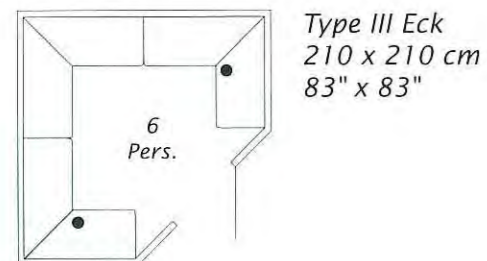
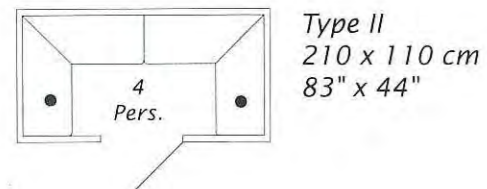
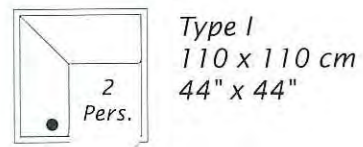
**Mergulho Salgado Piscinas e Spas, Lda.**  
 Tel. / Fax. 21 607 55 98 Telem. 919 91 60 50 / 962 444 011  
[geral@mergulhosalgado.com](mailto:geral@mergulhosalgado.com) [www.mergulhosalgado.com](http://www.mergulhosalgado.com)

INDIVIDUAL DESIGN

**Mergulho Salgado Piscinas e Spas, Lda.**  
 Tel. / Fax. 21 607 55 98 Telem. 919 91 60 50 / 962 444 011  
[geral@mergulhosalgado.com](mailto:geral@mergulhosalgado.com) [www.mergulhosalgado.com](http://www.mergulhosalgado.com)

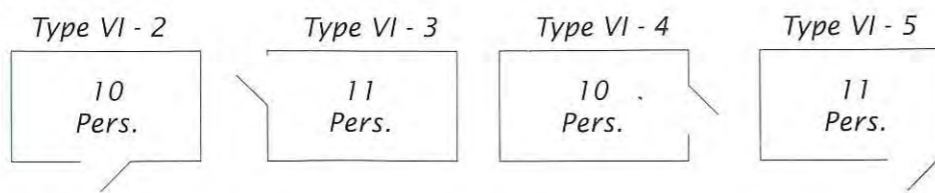
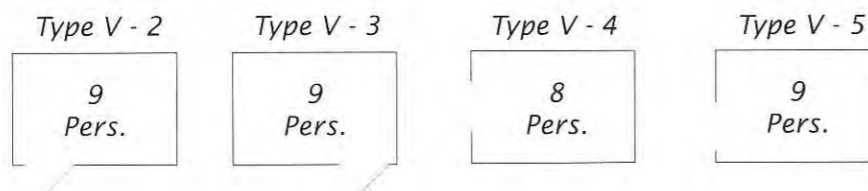
# Type and Size

Choose from 15 different models below



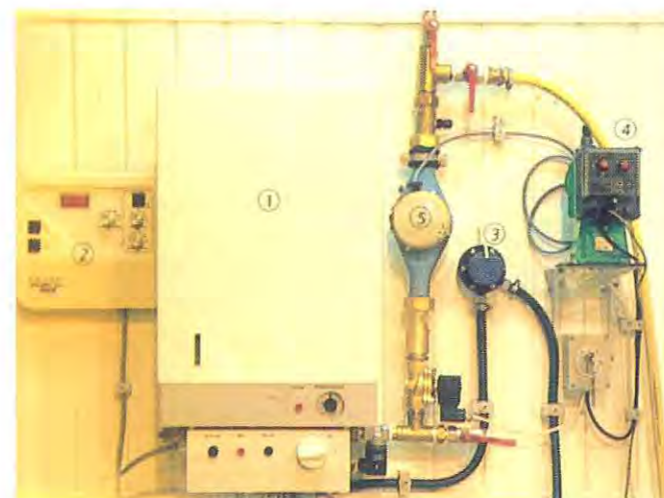
Type	Size (w x d x h)	Recommended Generator	Seating
I	110 x 110 x 210 cm 44" x 44" x 83"	4,7 kW	2
II	210 x 110 x 210 cm 83" x 44" x 83"	6 kW	4
III	210 x 210 x 210 cm 83" x 83" x 83"	9 kW	6
IV	210 x 210 x 210 cm 83" x 83" x 83"	9 kW	6-7
V	287 x 210 x 210 cm 113" x 83" x 83"	12 kW	8-9
VI	364 x 210 x 210 cm 144" x 83" x 83"	14 kW	10-11

Door may be right or left hand hinged  
● = Steam outlet head



Additional layouts to suit your individual requirements!

- Material:** 8 mm Acrylic sheet with ABS reinforcement, 16 mm in seating area.
- Colour:** High glazed, White
- Cabin Insulation:** Not supplied – we recommend 30 mm mineral wool for the wall elements and 60 mm mineral wool for the roof.
- Flooring:** Not supplied – must be water impervious i. e. ceramic tile and level where the floor frame is placed, with a 1:100 fall to a central trapped drain, minimum waste pipe size 40 mm diameter.
- Ventilation:** Air inlet under door  
Adjustable exhaust air outlet from roof – 100 mm diameter to be ducted to atmosphere.
- Specification:** Floor frame in extruded aluminium profile, Acrylic roof and wall elements with integral seating, corner joints and profile strips for joining wall and roof elements, gasket tape and silicone sealant, tinted safety-glass door with aluminium frame, light fitting with 24 V bulb, Steam generator from 4,7-9 kW as required, Control panel



- Generator:**
- Control Panel:** See separate specification sheet

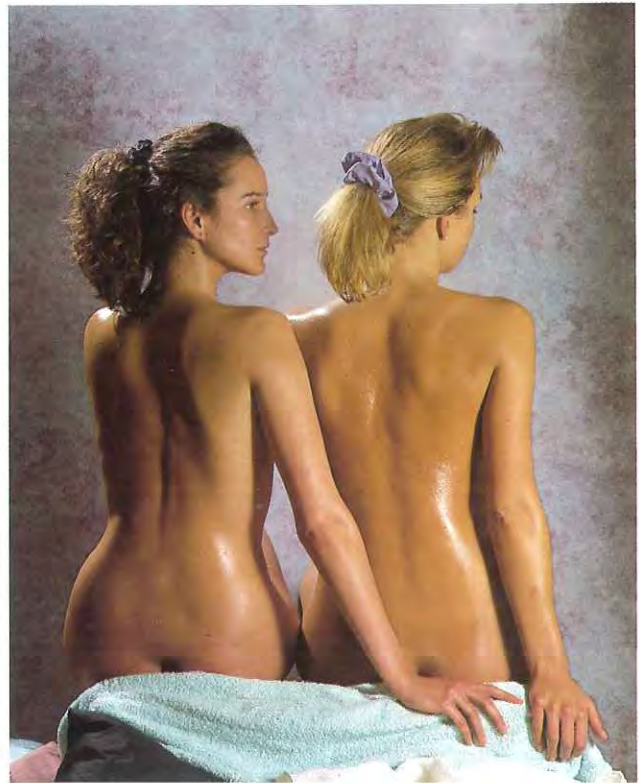
**Cleaning System:**  
A complete system for cleaning the cabin interior is optionally available. The main feature is the "Turbo-jet" outlet head (see illustration), which is ceiling mounted at the highest point in the steam room and ensures total cleaning of the wall and seating surface areas, after use. The pressure water system is additionally available through a separate hose, which should be connected via an instantaneous water heater to clean the floor and under the seats. In areas of hard water above 5dH the inclusion of a water softener with the installation is recommended.

**Mergulho Salgado Piscinas e Spas, Lda.**  
Tel. / Fax. 21 607 55 98 Telem. 919 91 60 50 / 962 444 011  
geral@mergulhosalgado.com [www.mergulhosalgado.com](http://www.mergulhosalgado.com)

**Cascais Piscinas e Spas**



**www.  
Mergulho Salgado  
.com**



**Mergulho Salgado Piscinas e Spas, Lda.**  
**Tel. / Fax. 21 607 55 98 Telem. 919 91 60 50 / 962 444 011**  
**[geral@mergulhosalgado.com](mailto:geral@mergulhosalgado.com) [www.mergulhosalgado.com](http://www.mergulhosalgado.com)**